



SHREE KRISHNA HOMES has been making your dream homes a reality for over a decade now. We are known for quality residential cum commercial project. Having completed many projects, **SHREE KRISHNA HOMES** are well-known builders in Badlapur and have managed to finish all the projects way ahead of schedule as well. We build more than just homes; we build communities and for the last few years we have been building Beautiful, luxury, lifestyle, premium, dream home communities where neighbour become friends. **SHREE KRISHNA HOMES** offers a combination of quality materials and superior design, where every detail is meticulously crafted. We believe that preserving the natural environment is an integral part of creating communities. And you will be proud to call this place your home.

TRIDENT

Beauty meets peace of mind

Creating a refreshment for TOMORROW



DESIGNED
ENTRANCE LOBBY



CLUB HOUSE



GYMNASIUM



INDOOR GAMES



INFORMAL SITOUT



AUTOMATIC LIFTS



PARKING



CCTV IN
COMMON AREA



24 HRS MIDC
WATER SUPPLY



RAIN WATER
HARVESTING



POWER BACKUP



FIRE SAFETY



1 BHK
Isometric View



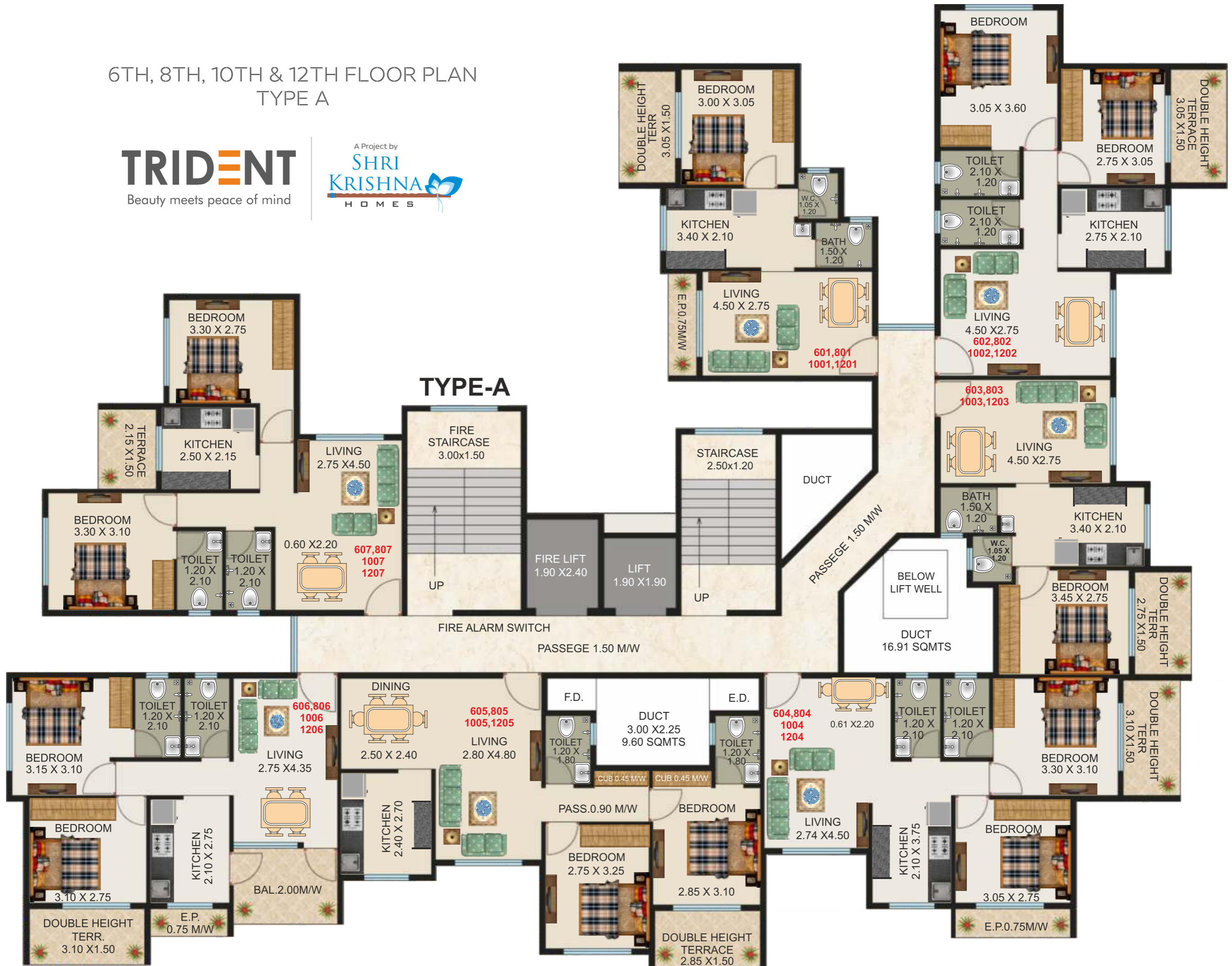
TRIDENT
Beauty meets peace of mind

A Project by
SHRI KRISHNA
HOMES

6TH, 8TH, 10TH & 12TH FLOOR PLAN
TYPE A



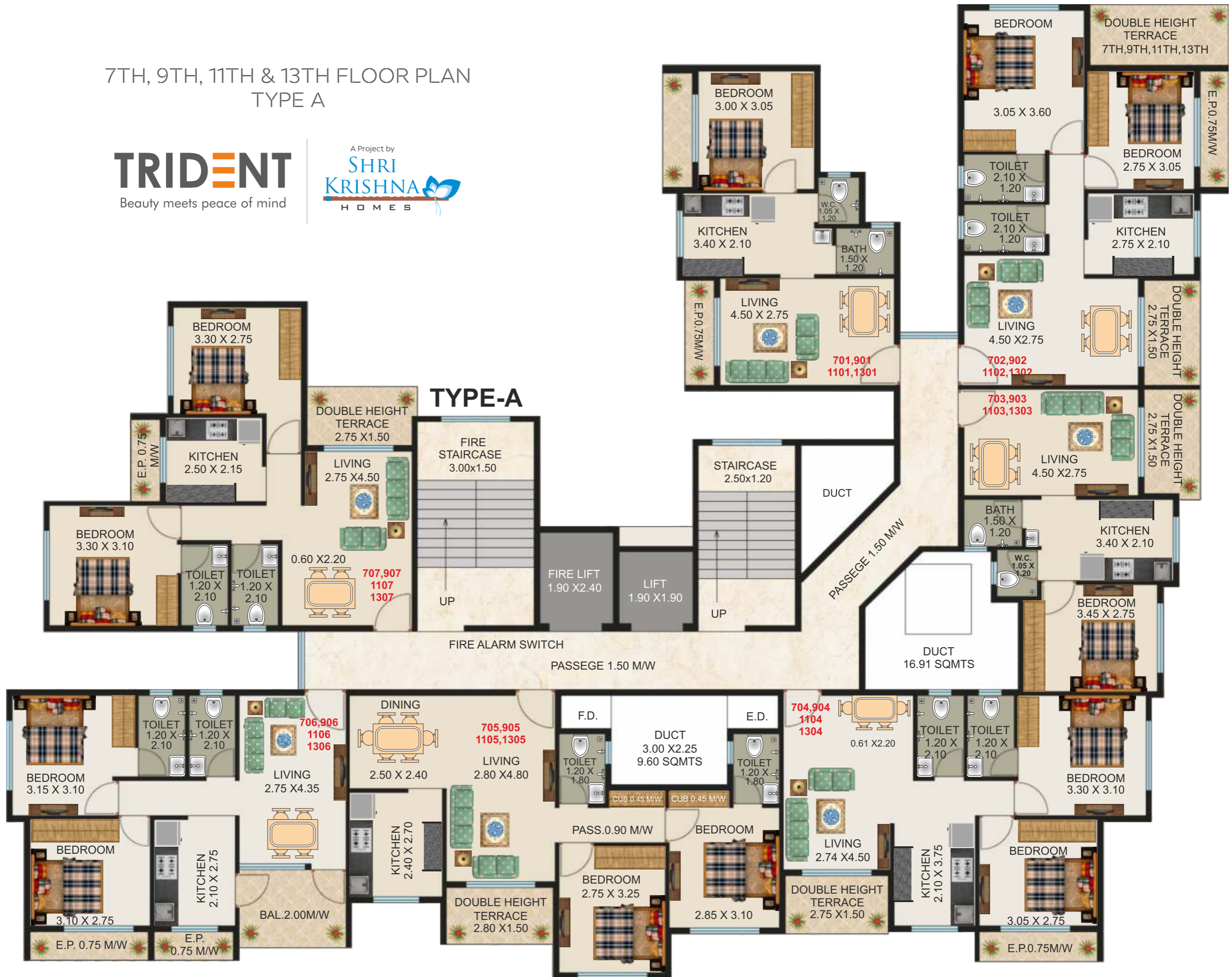
TYPE-A



7TH, 9TH, 11TH & 13TH FLOOR PLAN
TYPE A



TYPE-A



Live in a
land of
ENDLESS
DELIGHTS



Live where
YOUR HEART
leads you



artistic impression



artistic impression



artistic impression



artistic impression

1 BHK
Isometric View

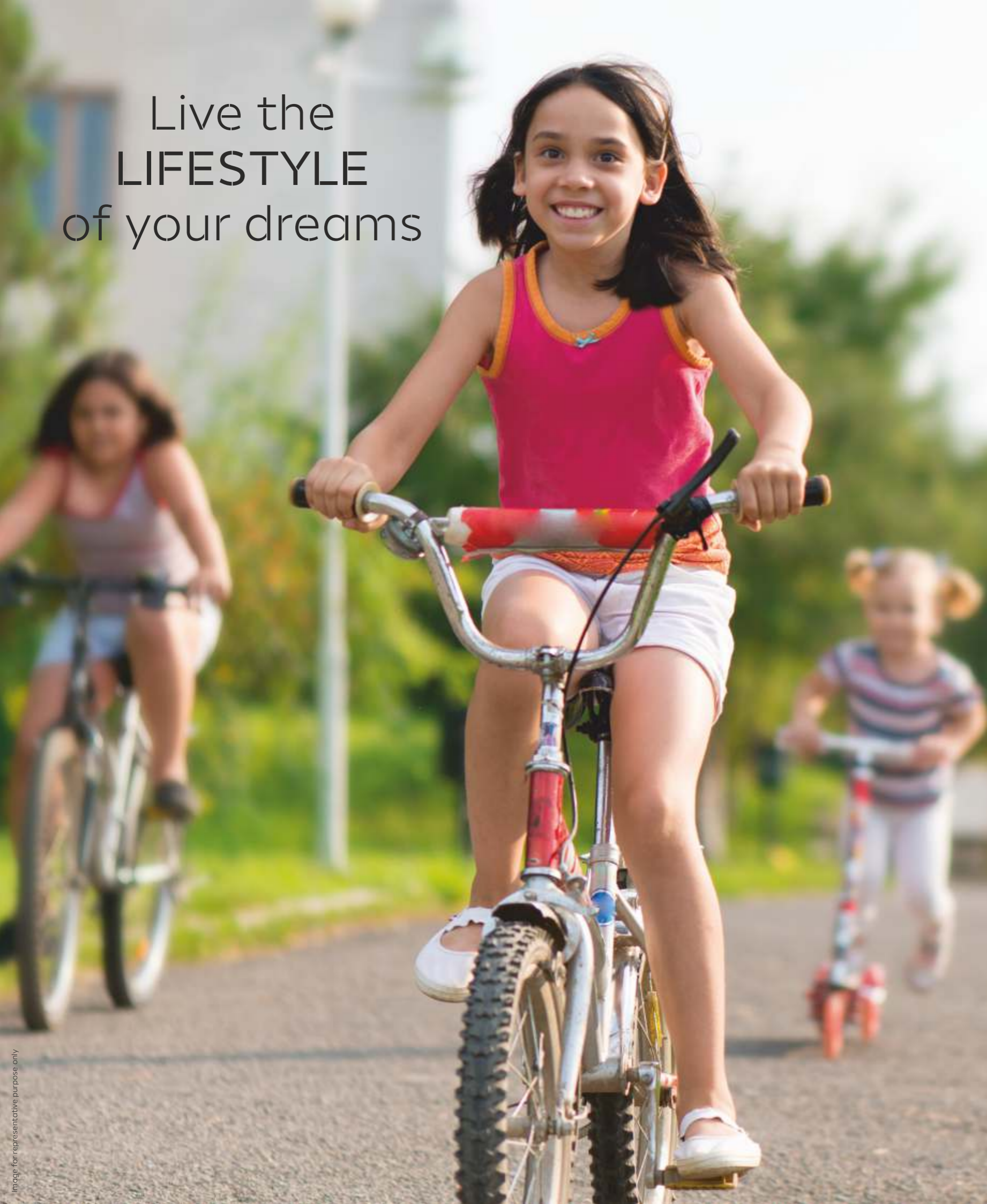
2 BHK
Isometric View





TYPICAL FLOOR PLAN
TYPE D

Live the
LIFESTYLE
of your dreams



INTERNAL AMENITIES

FLOORING

- Branded Vitrified Floor tiles in all the Rooms.

KITCHEN

- Granite kitchen platform.
- Stainless steel sink.
- Glazed tiles above platform upto beam level.
- Concealed plumbing.

DOORS

- Main Door: Flush door with decorative laminate sheets, safety lock and beautiful fittings.
- Bedrooms: Flush doors with laminates.

WINDOWS

- Heavy section powder coated aluminum windows with mosquito net.

ELECTRIFICATION

- Concealed Polycab copper wiring with MCBs and adequate points.
- Modular switches of reputed make.
- AC Points in master bedrooms.

PAINTING / WALL FINISH

- Good Quality on internal wall surfaces.

BATHROOM & WC

- Water proof FRP doors.
- Concealed plumbing.
- Bathroom C.P. fittings (Jaguar or Equivalent).
- Sanitary ware of reputed make.
- Anti skid tiles.
- Glazed wall tiles upto beam level.

EXTERNAL AMENITIES

ELEVATORS

- Branded High speed automatic lift with Inverter power backup

PAINTING / WALL FINISH

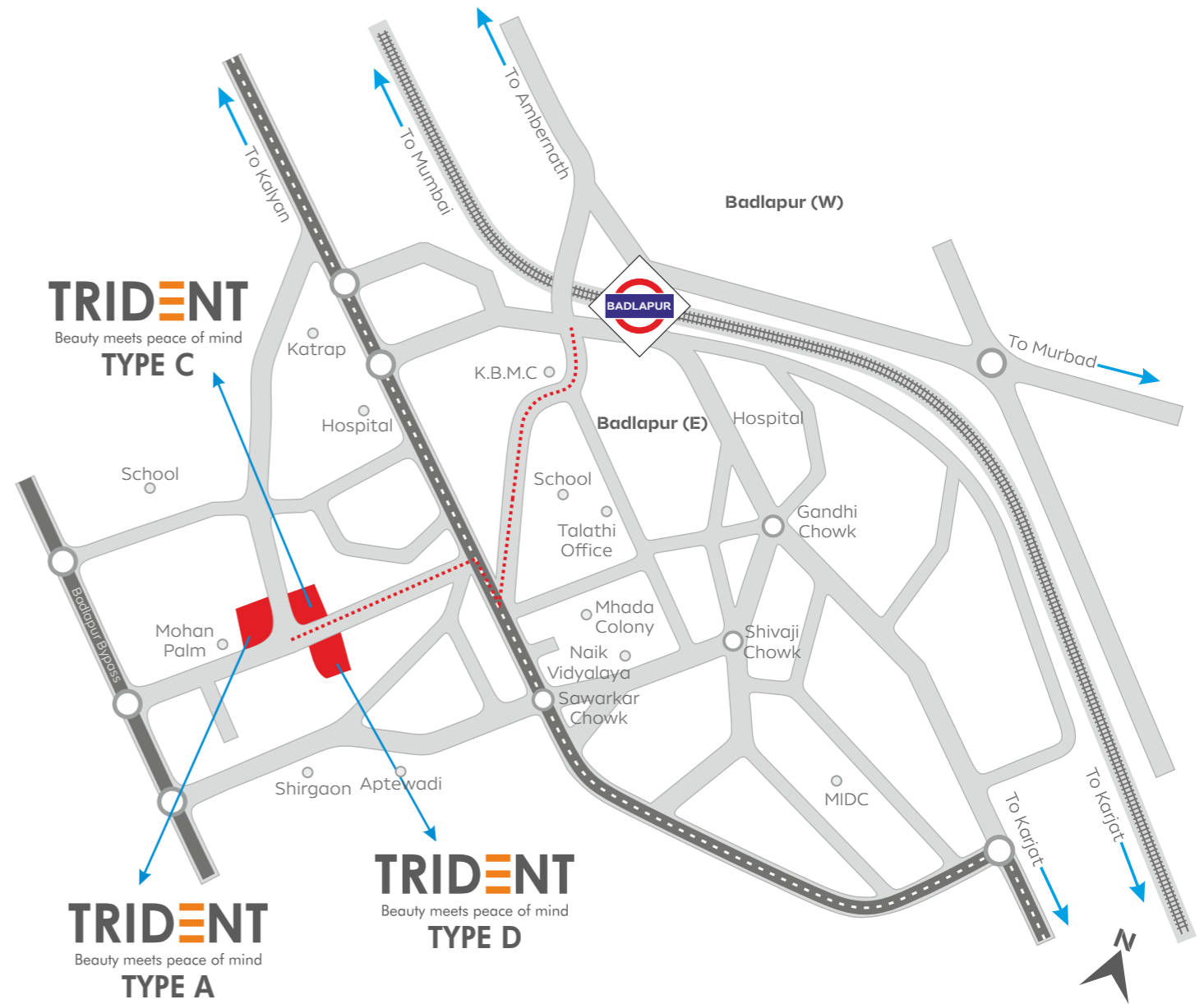
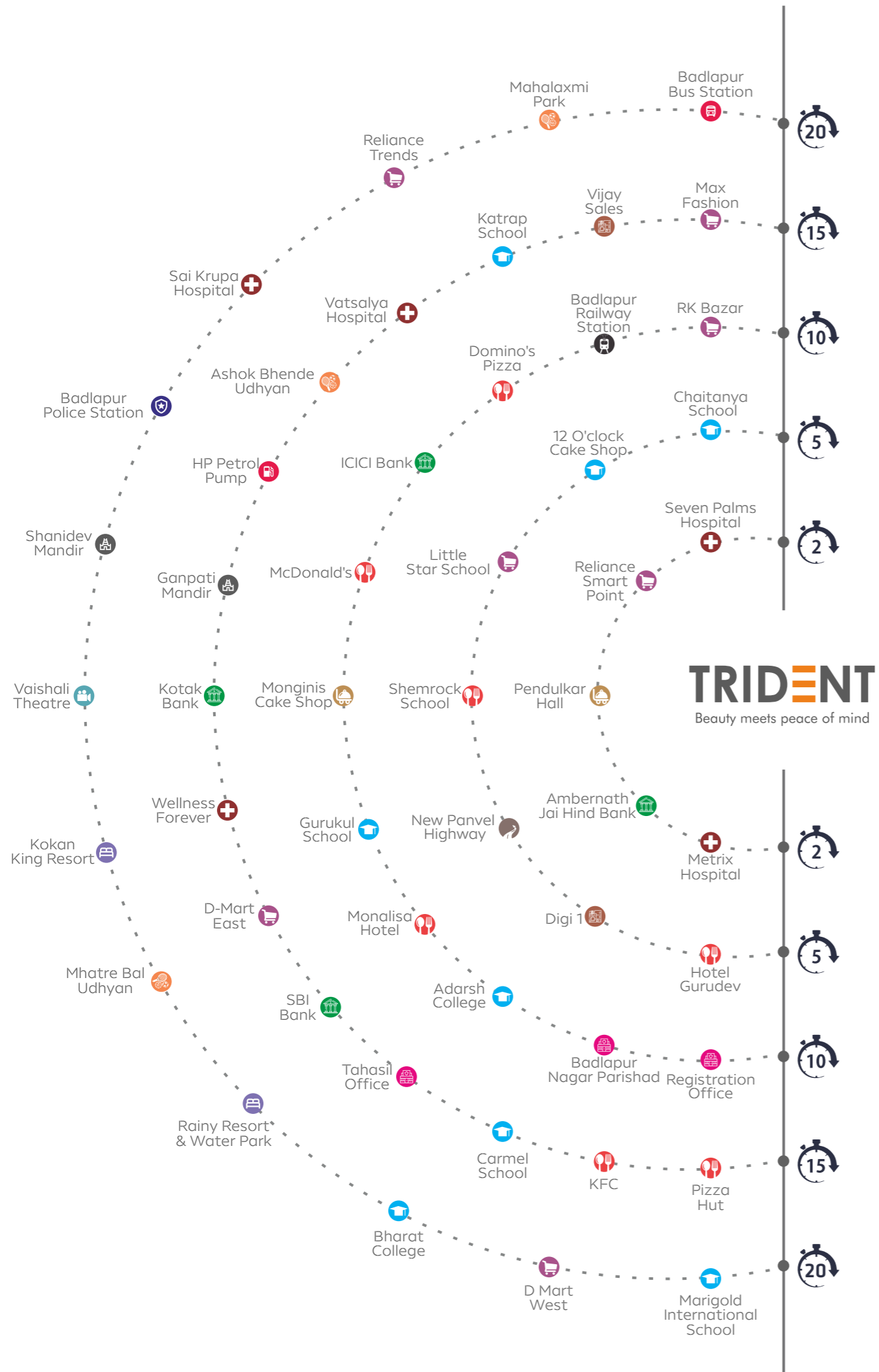
- Good Quality on external wall surfaces.
- Textured finish on dead walls.

SECURITY

- CCTV surveillance system in the building premises.
- Intercom security system.

WATER SOURCE

- Overhead and underground tanks with ample storage capacity.



BEST CONNECTIVITY



Architect Raj & Associates	RCC Consultant S. V. Patel & Associates	Project Consultant Dimensions	Legal Advisor Adv. Sanman Pathare	Design By Future Icon
-------------------------------	--	----------------------------------	--------------------------------------	--------------------------

Disclaimer: The visuals and information contained in this brochure are indicative of the kind of development that is proposed. Subject to approval of the authorities or in the interest of the continuing improvement, the Promoters/Developers reserve the right to change plans, specifications, or features, without prior notice or obligation. This brochure is issued for guidance only and does not constitute part of an offer or contract.