



**SHREEJI
GREENS**

BADLAPUR (E)



Breathe in the Freshness of
Nature!

UNIQUE OXY FRESH LIVING IN THE LAP OF NATURE



**SHREEJI
GREENS**

BADLAPUR (E)

Explore
the wonders of
Nature
together





**SHREEJI
GREENS**

1-2 BHK Homes
with Dining &
Master Bedroom



the project *Special* features



**SHREEJI
GREENS**
BADLAPUR (E)



A Lifestyle of Luxury & Convenience.

Live a Life of Luxury Surrounded by *Greenery*



SHREEJI
GREENS





The Grand
Entrance Gate



**SHREEJI
GREENS**

BADLAPUR (E)

- ◆ Attractive Main Gate
- ◆ Security Cabin
- ◆ Wide Road





The Modern
Club House



**SHREEJI
GREENS**

BADLAPUR (E)

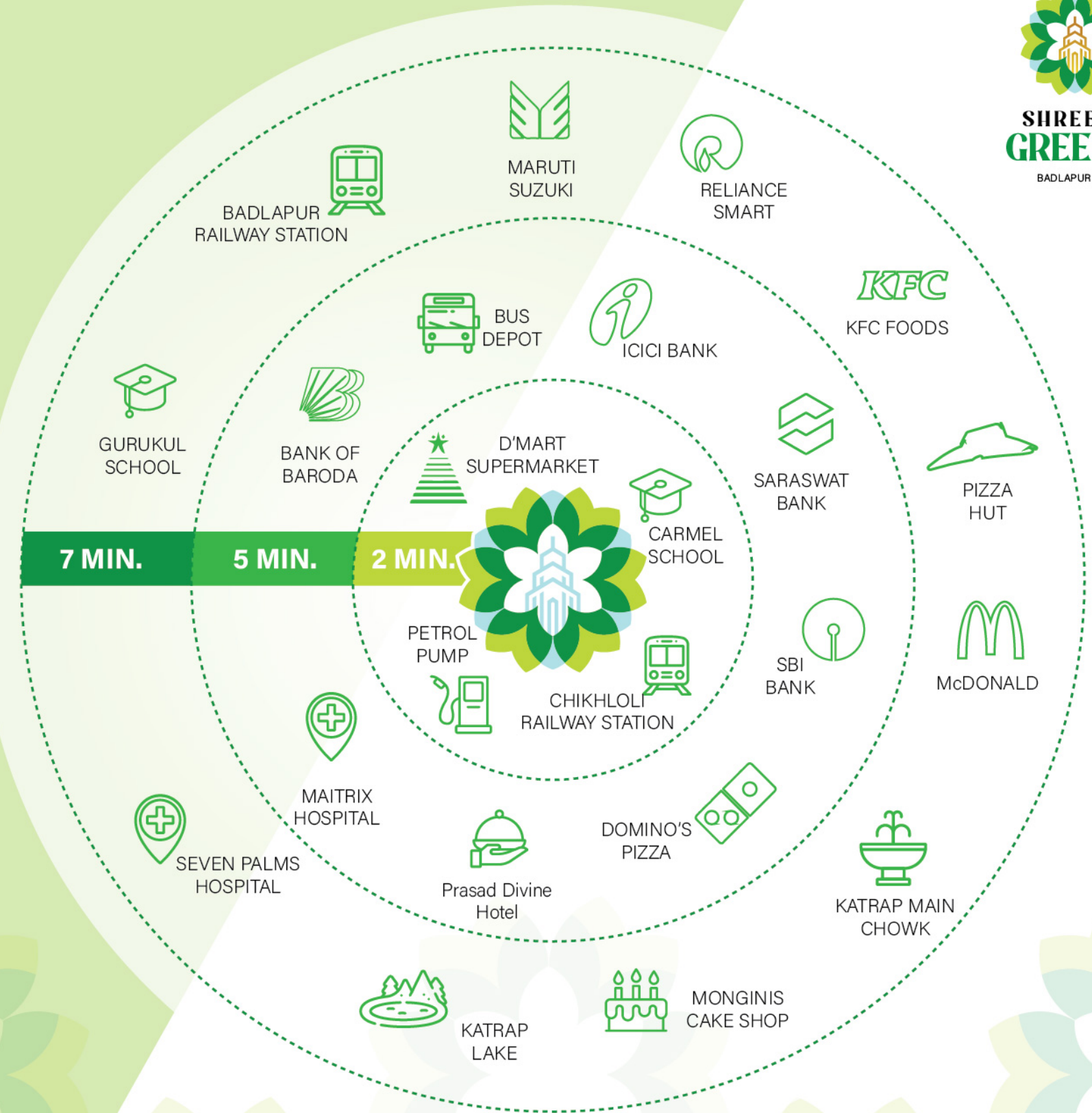
RECREATION FOR LIFETIME

- ◆ Landscape Garden
- ◆ Senior Citizen Sit out
- ◆ Jogging Track
- ◆ Open Air Yoga and Meditaton Space
- ◆ Designer Club House
- ◆ AC Gymnasium
- ◆ Indoor Games
- ◆ Children's Play Park with Play Equipments
- ◆ Gazebo with Seating
- ◆ Society Office
- ◆ Decorative Pargola



The Project

Locational Advantages



A Place to Live, Work, and Play

All the Civic Facilities You Need!

The Project *Specifications*

R.C.C.

- | Earthquake resistant structure.

Door:

- | Main door with decorative lamination finish and internal wooden door
- | Granite frame for all the doors of bath and WC.
- | Wooden door frames for all rooms.
- | Main door with good quality nightlatch and decorative handle.

Electrical:

- | Concealed copper wiring with reputed brand switches, TV cable points in living room.

Water Tanks:

- | Underground & overhead tank with adequate storage capacity

Flooring:

- | 2'x2' Vitrified Flooring tiles in all the rooms.

Bath / WC

- | Concealed plumbing with good quality sanitary fittings.
- | PVC plumbing fittings.
- | Glazed tiles up to full height.
- | Ceramic tiles flooring in bath & WC.
- | Good quality aluminium louvers in bath & WC.

Kitchen:

- | Granite kitchen platform with stainless steel sink.
- | Glazed tiles upto beam level above kitchen platform.

Windows:

- | Powder coated aluminium sliding windows with glass in living room, bedroom & kitchen.

Wall Finish:

- | Internal walls painted with paint.
- | External wall coated with paint.

Terrace:

- | Special water proofing treatment with China Chips.



1 BHK + Dining & Master Bedroom



2 BHK with Dining Space